

IP65 IK06 CE   

TIPOLOGIA / TYPOLOGY

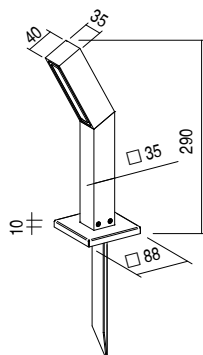
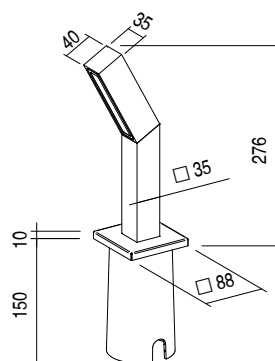
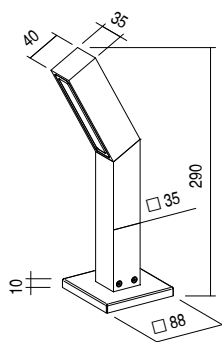
Paletto | Bollard

POSIZIONE INSTALLATIVA | INSTALLATION POSITION

A terra | Ground mounting

AMBIENTE INSTALLATIVO | INSTALLATION LOCATION

Esterno | Outdoor



UDEO BOLLARD S

H 290mm

9,5W

 kg 0,69

NEW UDEO BOLLARD S 24Vdc

CARATTERISTICHE ELETTRICHE | ELECTRICAL FEATURES

POTENZA ASSORBITA POWER CONSUMPTION	9,5W
ALIMENTAZIONE POWER SUPPLY	24Vdc
ALIMENTATORE POWER SUPPLY UNIT	9,5W - 24Vdc non incluso Not included
COLLEGAMENTO CONNECTION	Parallelo Parallel

CARATTERISTICHE ILLUMINOTECNICHE | LIGHTING FEATURES

COLORE LED LED COLOUR	2200K, 2700K, 3000K, 4000K, Red, Green, Blue
INDICE RESA CROMATICA CRI CRI	>80 (2200K, 2700K, 3000K, 4000K)
BINNING	3 step MacAdam 3 MacAdam steps
OTTICHE OPTICS	25°, 36°, 62°, Diffused
UGR	<19
FLUSSO REALE EMESSO - 3000K REAL OUTPUT FLUX	9,5W 771lm 36°
DURATA MEDIA LED AVERAGE LED LIFE	50.000h L80 B10

CARATTERISTICHE MECCANICHE | MECHANICAL FEATURES

PESO WEIGHT	Kg 0,69
FINITURE FINISHES	Bianco txt, Grigio txt, Nero txt, Corten, Antracite txt, Verde, Sand txt White, txt Grey, txt Black, Corten, txt Anthracite, Green, Sand
INSTALLAZIONE INSTALLATION	A terra con basetta, viti (includi) A terra con kit cassaforma e viti (non inclusi), su terreno con picchetto (non incluso) On ground with base and screws (not included), ground installation with housing box kit and screws (not included), in ground with peg (not included)
MATERIALE MATERIAL	Corpo e basetta in alluminio anticorrosivo, vetro temperato serigrafato Anticorrosive aluminium body and base, silk-screen printed tempered glass


CARATTERISTICHE GENERALI | GENERAL FEATURES

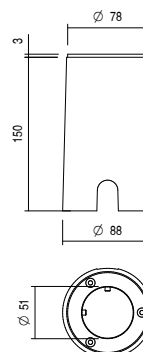
TEMPERATURA DI ESERCIZIO OPERATING TEMPERATURE	-10°C +45°C
GRADO DI PROTEZIONE INGRESS PROTECTION	IP65
GRADO DI RESISTENZA IMPACT RESISTANCE	IK06
GLOW WIRE TEST GLOW WIRE TEST	960°C.
TEMPERATURA MASSIMA APPARECCHIO MAX. TEMPERATURE OF FIXTURE	40° @ Ta = 25°
CLASSE DI ISOLAMENTO APPLIANCE CLASS	III
CALPESTABILE WALKOVER	No
CARRABILE DRIVE OVER	No
SICUREZZA STANDARD STANDARD SAFETY	I
SICUREZZA FOTOBIOLOGICA PHOTOBIOLOGICAL SAFETY	GR1


NEW

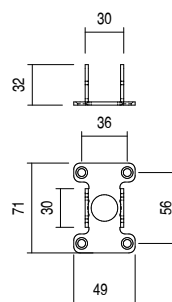
UDEO BOLLARD S 24Vdc


ACCESSORI | ACCESSORIES

CODICE / CODE	CAU02	
TIPOLOGIA / TYPOLOGY	KIT Cassaforma <i>KIT Housing box</i>	 kg 0,38
MATERIALE MATERIAL	Polipropilene e alluminio <i>Prolypropylene and aluminium</i>	



CODICE / CODE	BAU01	
TIPOLOGIA / TYPOLOGY	Basetta <i>Base</i>	 kg 0,1
MATERIALE MATERIAL	Acciaio inox <i>Stainless steel</i>	



CODICE / CODE	PIU01	
TIPOLOGIA / TYPOLOGY	Picchetto <i>Peg</i>	 kg 0,15
MATERIALE MATERIAL	Acciaio inox <i>Stainless steel</i>	

